



Finished Quilt Size: 55½" x 55½"

Finished Table Runner  
Size: 16" x 45½"



21936 S

Fabric 1 and inner border - Quilt



21936 M

Fabric 2 and Binding Table Runner and Quilt



21934 E

Fabric 3



21933 E

Fabric 4



21934 O

Fabric 5



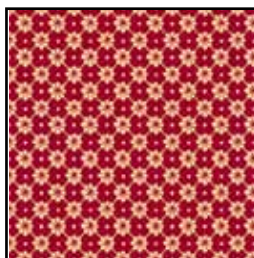
21933 O

Fabric 6



21937 E

Background/Setting



21937 M

Setting Quilt only



21932 R

Outer Border Backing (Quilt)



21932 S

Inner Border Backing (Table Runner)

Quilt		
Fabric #	FABRIC REQUIREMENTS	
	Design	Yards
1 and Inner Border	21936 S	¾
2 and Binding	21936 M	⅞
3	21934 E	¼
4	21933 E	¼
5	21934 O	¼
6	21933 O	¼
Background	21937 E	1½
Setting	21937 M	⅞
Outer Border	21932 R	1
Backing	21932 R	3½

Table Runner		
Fabric #	FABRIC REQUIREMENTS	
	Design	Yards
1	21936 S	⅛
2	21936 M	⅛
3	21934 E	⅛
4	21933 E	⅛
5	21934 O	⅛
6	21933 O	⅛
Setting	21937 E	1
Inner Border	21932 S	¼
Outer Border	21932 R	1
Binding	21936 M	⅜
Backing	21932 S	1½

Designed by Brenda Plaster

Skill Level: Advanced

The quilt is composed using two block designs, a large Eight-Point Star (center block) and the Four Star block. The Four Star block is made up of four small Eight-Point Star blocks, so both blocks are sewn in the same way.

Additional Materials: Fusible webbing: 1 yard

## CUTTING

WOF=width of fabric

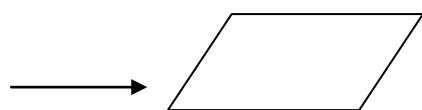


Illustration 1

### Fabric 1 Gold Paisley Lace:

*Large Star block:* Cut one  $3 \frac{5}{8}$ " x WOF strip.

Cut one edge of strip at 45 degree angle.

Placing ruler along that edge, sub cut  $3 \frac{5}{8}$ " from edge. See above illustration 1. Cut four patches.

*Small Stars blocks:* Cut three  $1 \frac{7}{8}$ " x WOF strips. Cut one edge of strip at 45 degree angle, as above. Placing ruler along that edge, sub cut  $1 \frac{7}{8}$ " from edge. Cut thirty-two patches.

*Inner border:* Cut five  $1 \frac{1}{2}$ " x WOF strips

### Fabric 2 Wine Paisley Lace

*Large Star block:* Cut one  $3 \frac{5}{8}$ " x WOF strip, sub cut four patches as above.

*Small Stars blocks:* Cut three  $1 \frac{7}{8}$ " x WOF strips, sub cut thirty-two patches as above.

*Binding:* Cut six  $2 \frac{1}{2}$ " x WOF strips

**Fabrics 3-6** Burnt Orange Floral Medallion and Floral Trellis and Cream Floral Medallion and Floral Trellis

*Small Stars blocks:* From each fabric, cut two  $1 \frac{7}{8}$ " x WOF strips. Cut, sixteen patches from each fabric, following instructions above.

### Cream Small Floral:

*Large Star block background:* Cut one 17" x WOF strip, sub cut one 17" square.

*Small Stars blocks background:* Cut four 9" x WOF strips, sub cut into sixteen 9" squares.

**Wine Small Floral Setting Triangles:** Cut one  $23 \frac{7}{8}$ " X WOF strip; sub cut one  $23 \frac{7}{8}$ " square, Cut in half diagonally twice to make four setting triangles and sub cut two  $12 \frac{1}{4}$ " squares. Cut in half diagonally once to make four corner setting triangles.

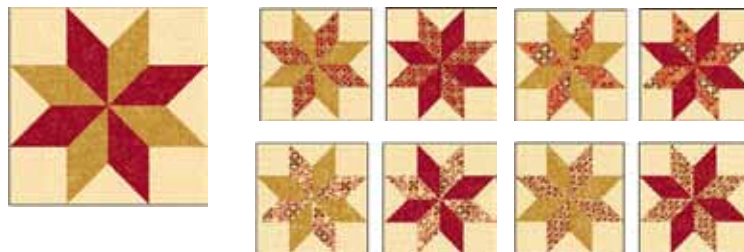
### Red Paisley Outer Border:

Cut six  $4 \frac{1}{2}$ " x WOF strips.

## PIECING INSTRUCTIONS

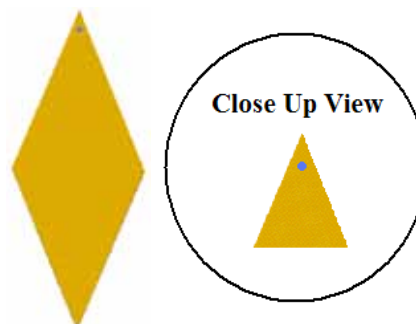
All seams are sewn with a  $\frac{1}{4}$ " seam allowance, unless noted otherwise

Follow step 1 - 4 below to construct the Large and each of the Small Star blocks.



Make 1 Large Star      Make 2 each of the Small Stars

1. On the wrong side of the fabric, mark the corner of the diamond pieces at the intersection of the  $\frac{1}{4}$ " seam allowance as shown below.



2. Sew one diamond of each fabric right sides together (RST), as shown below. Make sure that the marked dots on both pieces are aligned with each other. Shorten your stitch length on your sewing machine and start sewing at the dot. Make about 4 stitches at this length before returning the stitch back to a normal length and finish sewing the seam. With the wrong side facing you, press the seam to the left. Repeat to make 4 unit pairs.

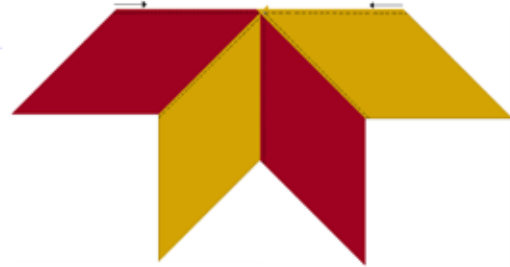


3. Place two unit pairs, RST, as shown below. Make sure that the dots on both units are aligned with each other. Start sewing at the outer edge with a normal stitch length. Shorten your stitch length just before you get to the dot. As you approach the dot, gently fold the previously sewn seam out of the way. With the wrong side facing you, press the seam to the left. Repeat to make 2 half block units.



4. Sew the half block units together RST as shown below. Make sure that the dots on both units are aligned with each other. Sew from the outer edges towards the middle. Start sewing with a normal stitch length. Shorten your stitch length just before you get to the dot. As you approach the dot, gently fold the previously sewn seams out of the way. With the wrong side facing you, press the seam to the left. Each half of this new seam will go in opposite

directions. On the wrong side of the block, in the center, the points of the seams will form a rosette. Clip the “dog ears”.

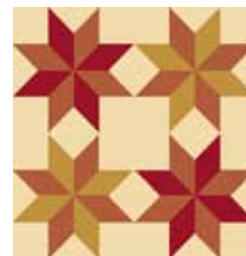


5. Trace the star on the fusible webbing and cut out. Iron fusible webbing to wrong side of star. Remove paper backing.

6. Center each star on background fabric square. The large star goes on the 17” square and the small stars go on the 9” squares. Press to fuse the fabric in place. Pin and Machine appliqué star to background fabric.

7. Trim the Large Eight Point Star (center star) block to 16 ½” square.

8. Trim the small Stars star blocks to 8 ½” square. Sew four star blocks together to make a four star block. This should measure 16 ½” square. Make four 4-block units. Each set of four blocks should contain the same multi print in all four blocks.



9. Sew the large setting triangles to the sides of one of the four star blocks and the small setting triangles to the top of the unit as shown below. Press the seams towards the triangles. Repeat with another four star block unit to make two triangle assemblies.



10. Sew the two remaining four star block units to the sides of the large star block. Sew the two remaining small setting triangles to the sides of the four star block units as shown below to complete the center. Press the seams towards the center assembly.



11. Sew the two triangle assemblies to the long sides of the center assembly as shown below. Press the seams away from the center.



12. Join the border strips for the inner border using diagonal seams. Measure the quilt top through its center and cut two strips this length. Sew these to opposite sides of the top. Measure top through its center again including the borders you just added. Cut two strips this length and sew on remaining sides of top.

13. Using same method, add outer borders.  
14. Layer, quilt as desired and bind.

## Table Runner

Additional Material: 1 yd. Fusible webbing

*The star blocks for the Table Runner are constructed in the same manner as the blocks for the quilt. Refer to Quilt directions for assembly method for blocks.*

## CUTTING

**Fabric 1-6 (Star segments):**

Cut one 1 3/4" strip of each fabric.

Make a 45 degree cut at end of strip.

Placing ruler along that edge, cut 1 3/4" from edge.

**Fabrics 1 and 2 Gold and Wine Paisley Lace -**  
Cut eight patches each

**Fabrics 3-6, Orange and Cream Floral Medallion and Floral Trellis**

-Cut four patches each

**Fabric 7 Cream Small Floral:**

*Background* Cut one 8" strip. Cut into four 8" squares.

*Setting triangles:* Cut one 11 1/4" strip. Cut into three 11 1/4" squares. Cut each square in half diagonally twice to make six side setting triangles.

*Corner Setting Triangles:* Cut one 6" strip. Cut into two 6" squares. Cut each square in half diagonally to make four corner setting triangles.

**Gold Paisley (Inner Border):**

Cut three 1 1/2" strips.

**Red Paisley (Outer Border):**

Cut four 2 1/2" strips.

**Wine Paisley Lace (Binding):**

Cut four 2 1/2" strips.

## PIECING INSTRUCTIONS

1. Following steps 1 - 4 of the piecing instructions for the quilt and using 4 patches of each fabric listed below and the cream background squares, construct 1 star block in each of the following combinations. Trim each block to 7 1/2" square.

**Star Block A** - Fabric 1, Gold Paisley Lace and Fabric 5, Burnt Orange Floral Trellis

**Star Block B** -Fabric 2, Wine Paisley Lace and Fabric 4, Cream Floral Medallions

**Star Block C** - Fabric 1, Gold Paisley Lace and Fabric 6, Burnt Orange Medallions

**Star Block D** - Fabric 2, Wine Paisley and Fabric 3, Cream Floral Trellis

2. Sew a corner setting triangle to 2 adjacent sides of Star Blocks A and D. Sew a side setting triangle to one remaining side of Star Blocks A and D. (Figure 1)

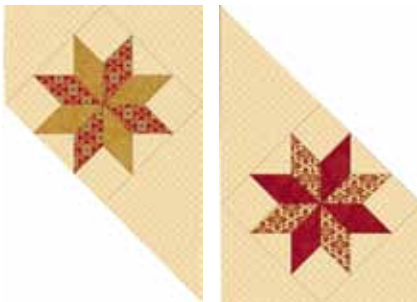


Figure 1

3. Sew a side setting triangle to two opposite sides of Star Blocks B and C. (Figure 2)

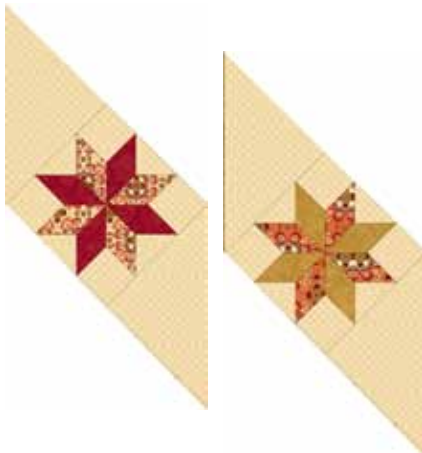


Figure 2

Referring to Figure 3, sew together units made in steps 2 and 3.



Figure 3

## Borders

### 4. Inner Border

Using a diagonal seam, sew Gold Paisley strips together. Measure the length of the table runner through the center. Cut two strips to this length and sew to each side of the runner. Measure the width of the table runner (including side borders). Cut two strips to this length and sew to the top and bottom of the runner. Press seams toward border.

### 5. Outer Border

Using the same method and the Red Paisley strips, add the outer borders.

**Layer, quilt as desired and bind.**